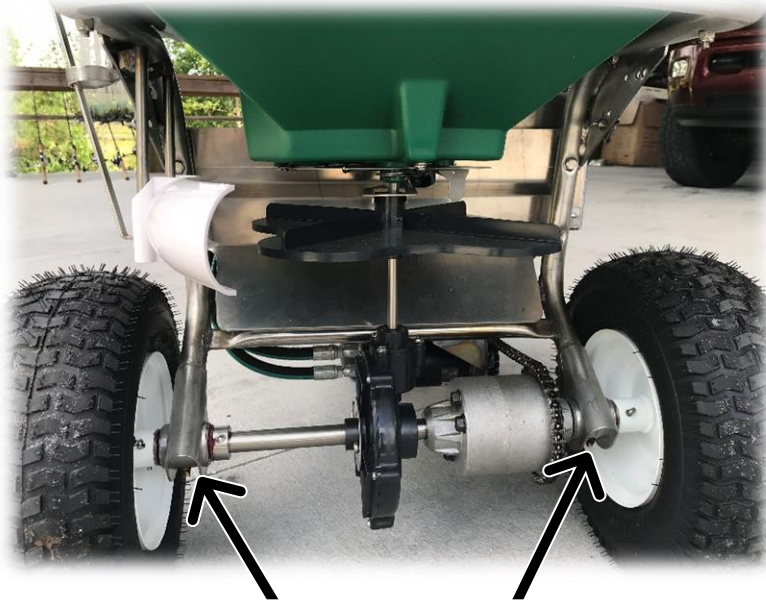


# General Maintenance

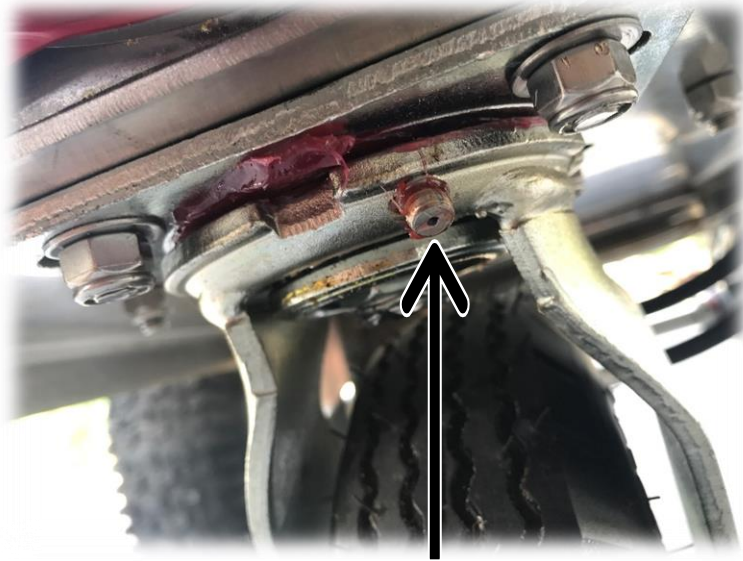
- After each day of use wash out hopper and any fertilizer on machine.
- Do Not use high pressure power washer.
- Use blower to blow excessive water off.
- Spray an oil type spray like WD-40 on all metal parts to repel water.
- Roll machine forward to ensure entire chain is sprayed.
- Grease front axle bearings to push out moisture \*see below
- Grease rear wheel bearing and swivel \*see below
- Check hydraulic fluid level (should be 80% full) \*see below



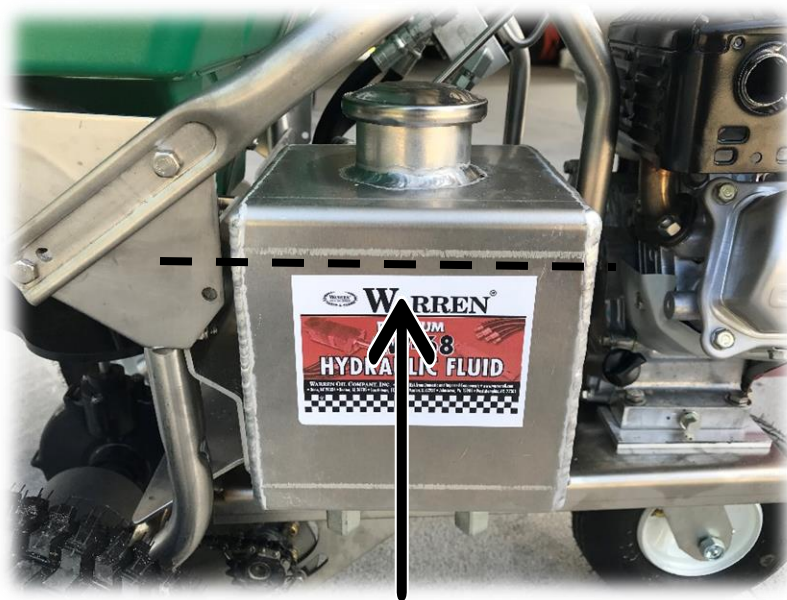
**Location of front axle bearings**



**Location of rear axle bearings  
(Grease at either location)**



**Location of rear swivel bearings**



**Approximate height of fluid level**